

# School-Based Health Care: Increasing Access to Health Services through Mobile Health Partnerships

**Dannielle Dobbins, M.Ed.**

**Workshop Session #2:  
Sunday, Sept. 10, 2023**





# Learning Objectives

1. Identify the key components of the School-Based Mobile Health Care Toolkit.



## Learning Objectives

2. Identify the key components of a high-quality, sustainable school-based health center and the corresponding opportunities and challenges of integrating mobile healthcare.



## Learning Objectives

3. Identify best practices from existing school-based mobile healthcare entities, exploring challenges and opportunities related to agreements, data sharing, staffing models, and roles and expectations.



## Learning Objectives

4. Develop up to three strategies to increase partnerships with schools and other health agencies.

# School-Based Health Alliance

## Transforming Health Care for Students

### Our **Focus**

The School-Based Health Alliance Works to Support & Grow SBHCs

#### Policy



Establishes and advocates for national policy priorities

#### Standards



Promotes high-quality clinical practices and standards, including for telehealth

#### Data



Supports data collection and reporting, evaluation, and research

#### Training



Provides training, technical assistance, and consultation

We support the improvement of students' health via school-based health care by supporting and creating community and school partnerships [www.sbh4all.org](http://www.sbh4all.org)

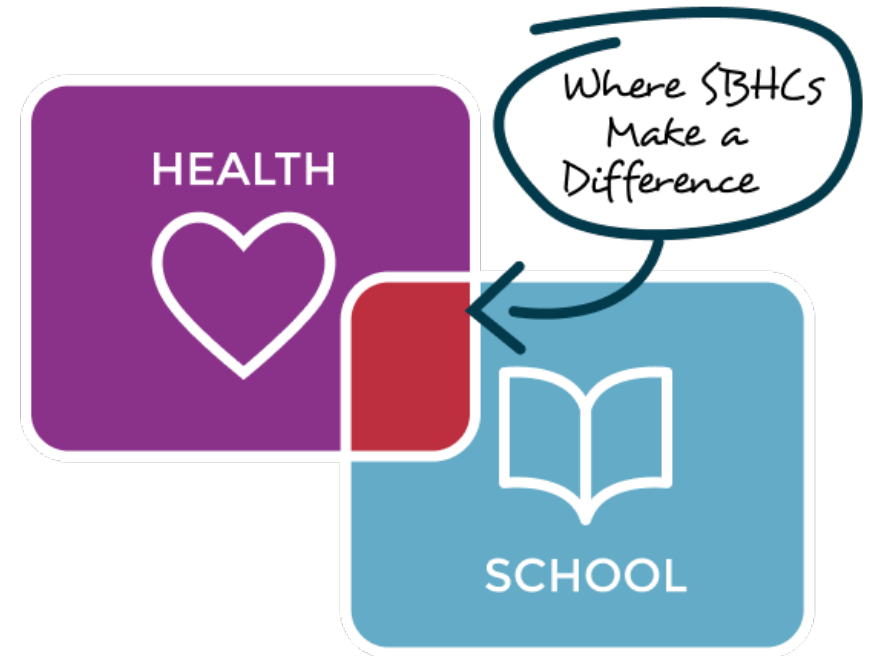
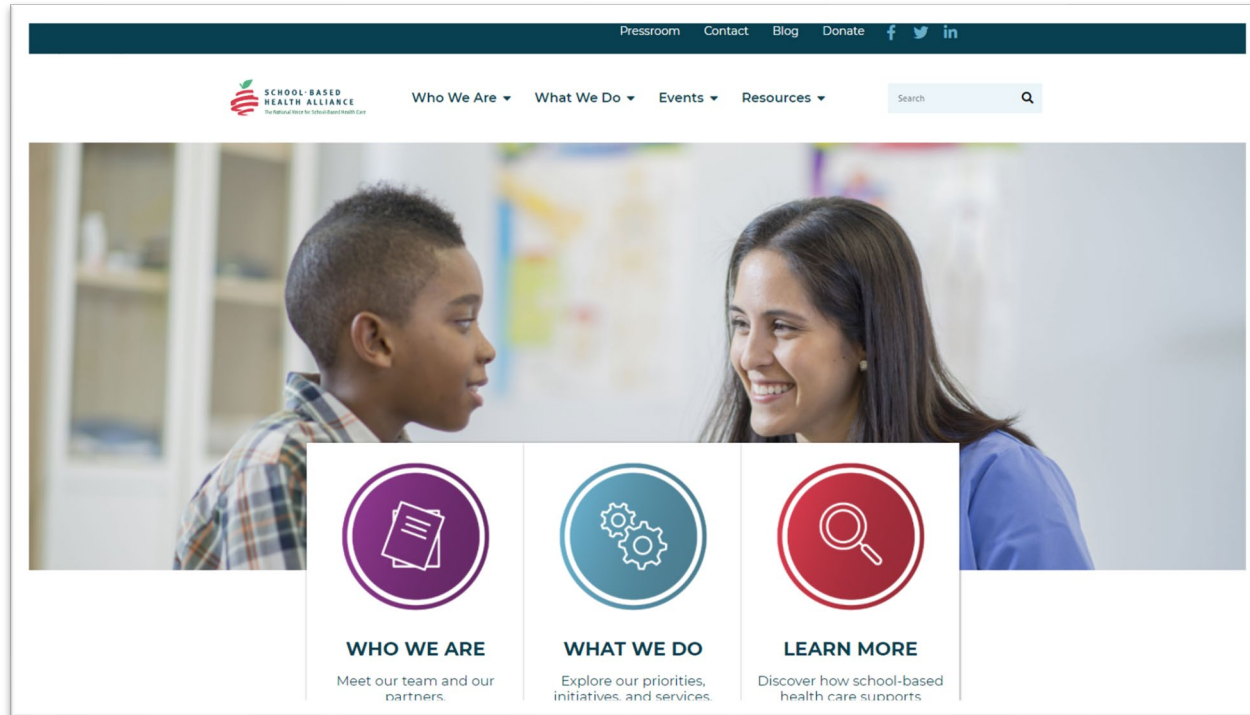
We Believe...

**In the transformational power  
of the health and education  
intersection**

**HEALTHY STUDENTS**  
*make better learners*



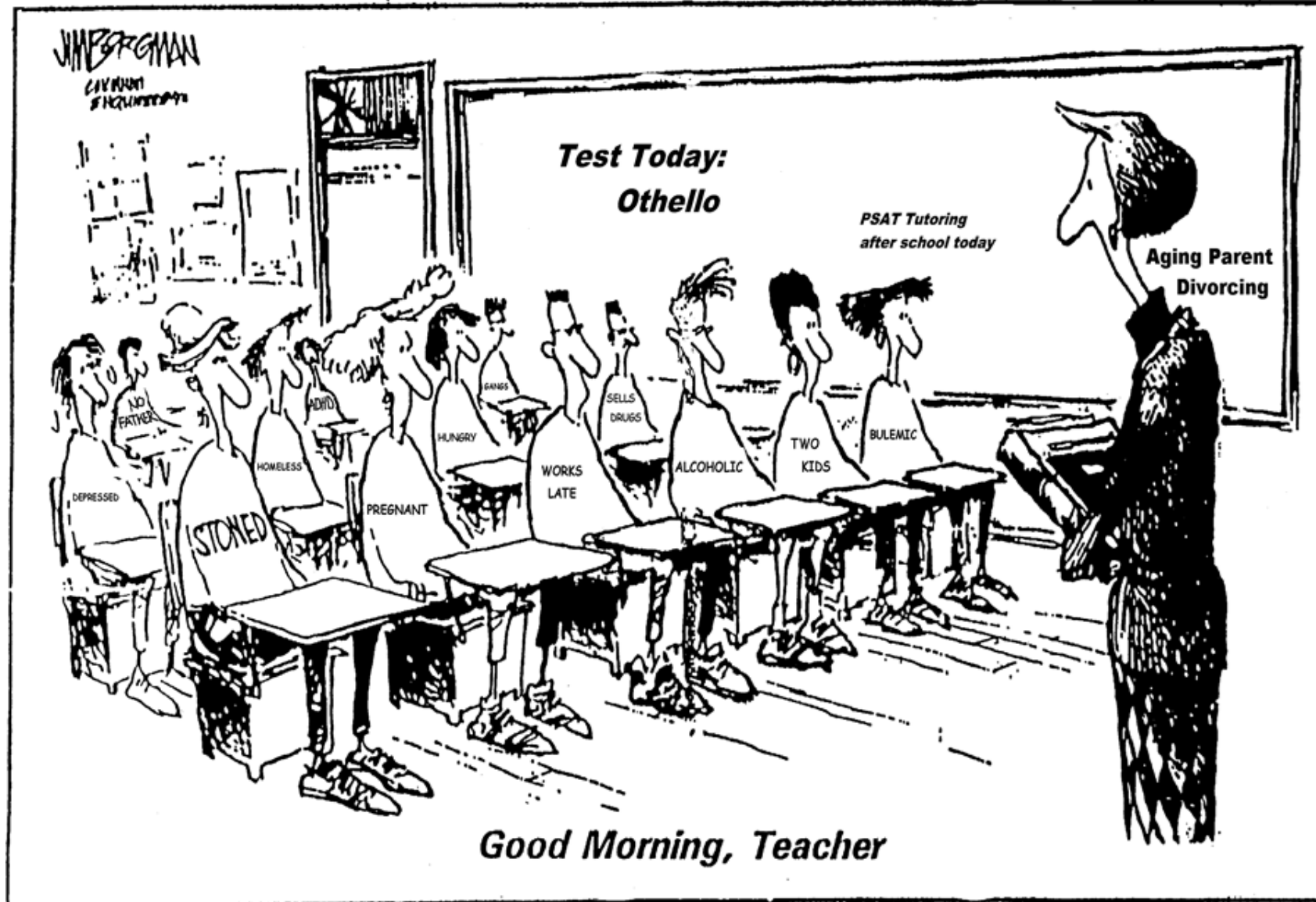
# School-Based Health Alliance



[www.sbh4all.org](http://www.sbh4all.org)

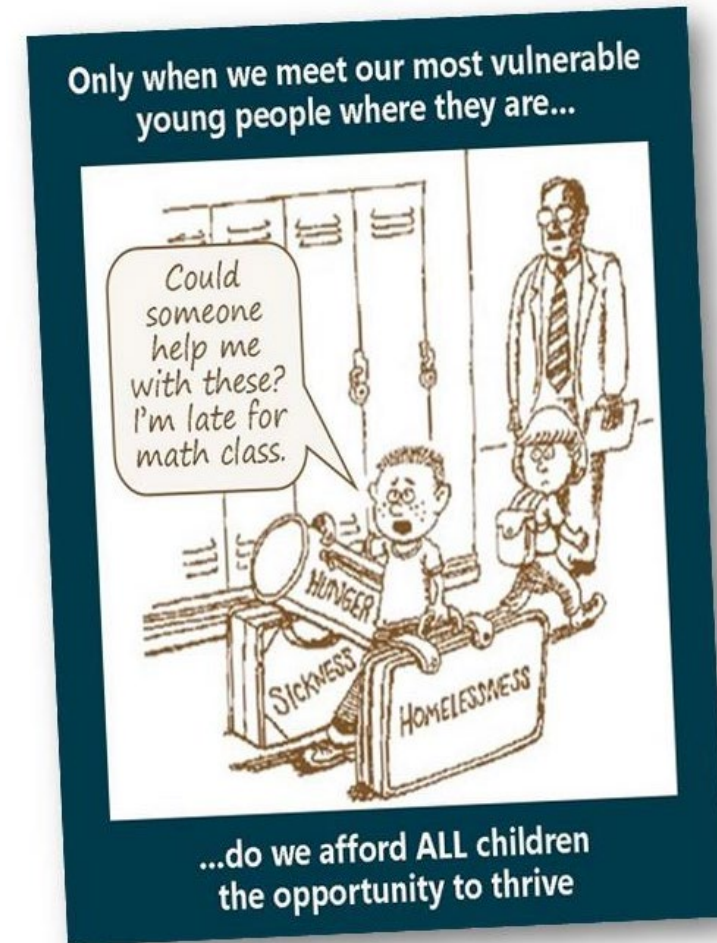






# School-Based Health Center Defined

- Shared commitment between a school, community and health care organization(s)
- Support students' health, well-being and academic success by providing an array of services such as:
  - Primary Care
  - Mental Health
  - Oral Health Care
  - Vision Care
- Works with existing school services and care providers but do not replace



Artist: Scott Spencer



## ACCESS

SBHC assures students' access to healthcare and support services to help them thrive.



## STUDENT FOCUS

SBHC team and services are organized around student well-being and academic success.



## HIGH-QUALITY CARE

SBHC delivers high-quality, comprehensive care to achieve optimal outcomes for students.



## COLLABORATIVE SCHOOL PARTNERSHIPS

SBHC is typically governed and administered separately from the school, works collaboratively with the educational environment to support the school's mission of student success.

## SCHOOL WELLNESS

SBHC engages with the school to participate, support, and improve a culture of health across the school community.



## SYSTEMS COORDINATION

SBHC coordinates across relevant systems of care that share in the well-being of its patients.



# Core Competencies

## SUSTAINABILITY

SBHC employs sound business management practices to ensure that health services are sustained long-term.



	SCHOOL HEALTH SERVICES	SCHOOL-BASED HEALTH CARE
<b>COMMON TYPES OF SERVICES</b>	School nursing, school counseling, school psychology, school social work services	Primary care assessment, diagnosis, and treatment; mental and behavioral health assessment, diagnosis, and treatment; oral health preventive and restorative services; vision care services
<b>ELIGIBLE FOR MEDICAID REIMBURSEMENT</b>	Yes, but states may be required to submit a state plan amendment	Yes
<b>MEDICAID PROVIDERS MUST MEET FEDERAL AND STATE REQUIREMENTS</b>	Yes	Yes
<b>PROVIDE SERVICES COVERED UNDER THE EARLY AND PERIODIC SCREENING, DIAGNOSTIC, AND TREATMENT (EPSDT) MEDICAID BENEFIT</b>	Yes, in some areas	Yes
<b>SERVICES PROVIDED IN-PERSON, VIA TELEHEALTH OR BOTH</b>	Yes	Yes
<b>SERVICES LEGALLY REQUIRED TO BE PROVIDED BY SCHOOLS</b>	Yes, if required under a student's Individualized Education Plan (IEP) under the Individuals with Disabilities Education Act (IDEA)	No
<b>PARENTAL CONSENT REQUIRED FOR SERVICES</b>	<u>Yes</u>	Yes, unless state laws allow otherwise
<b>GOVERNING ENTITY</b>	Local Education Agency	Community Healthcare Organizations (e.g., hospitals, public health agencies, FQHCs, non-profits)
<b>LEGAL AUTHORITY GOVERNING HEALTH DATA AND PRIVACY</b>	Family Educational Rights and Privacy Act (FERPA)	Health Insurance Portability and Accountability Act (HIPAA)



# What are School Health Services?

School health services include, but are not limited to



**School nurses**



**School psychology**



**School counselors**



**School social  
workers services**



# What is School-Based Health Care?

School-based health care is provided through school and community health organization partnerships, and in collaboration with school administration and health services staff.

This care includes but is not limited to



Primary care



Mental health



Oral health



Vision services

School-based health centers (SBHCs) offer the most comprehensive type of school-based health care. The Center for Disease Control and Prevention's (CDC) Community Preventive Services Task Force [recommends SBHCs](#) as an evidence-based model that improves educational and health outcomes.



# WHY SCHOOL-BASED HEALTH CARE?



# How do Schools Support Student Health?

- **Powerful tools for achieving health equity among children and adolescents** regardless of their race, ethnicity, or family income.
- **Create and uphold intersecting systems of care** that support children in being healthy, feeling safe, and effectively engaging with school.
- Schools can support student health through several models: **school health services and school-based health care.**





## Equality



## Equity



© 2017 Robert Wood Johnson Foundation.  
May be reproduced with attribution.



# SBHCs ...

Help students and their families overcome access barriers



Transportation



Time



Language



Financial



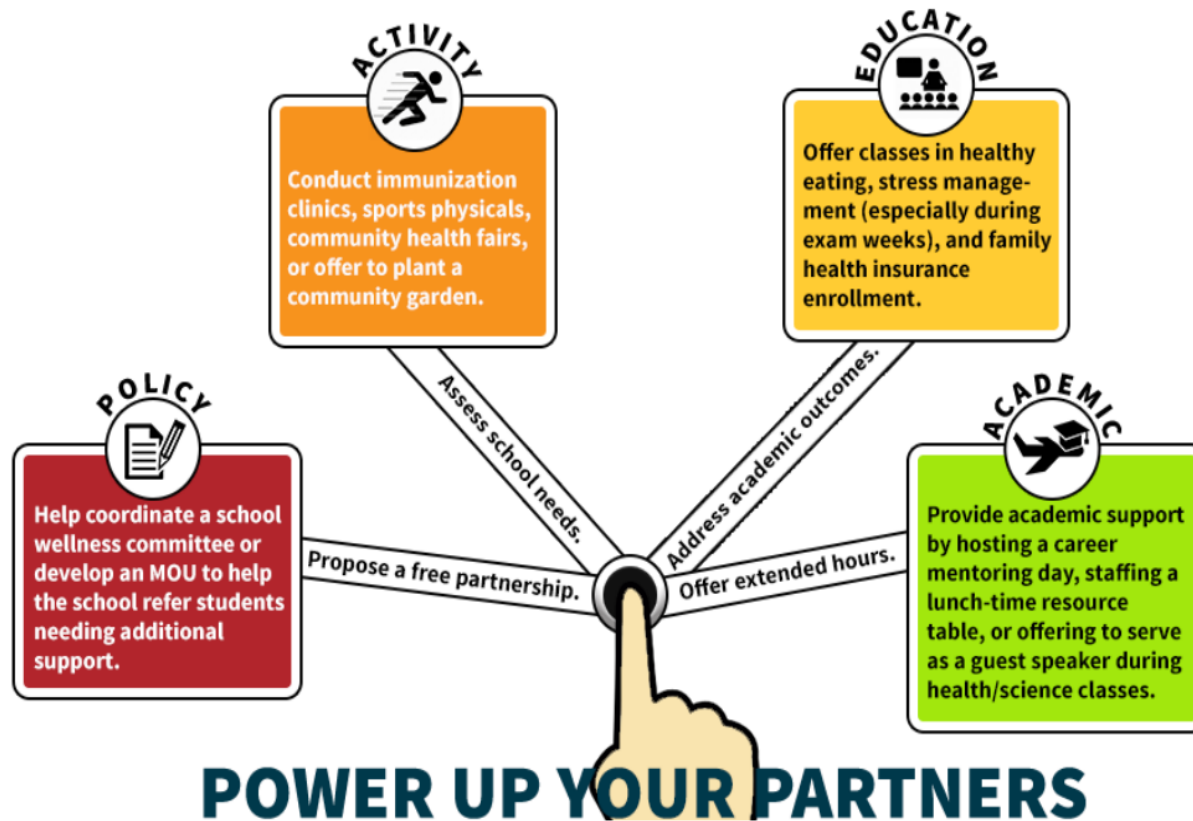
# SBHC Delivery Models

	<b>Traditional (87.1%)</b>	<b>School-Linked (3.8%)</b>	<b>Mobile (3.0%)</b>	<b>Telehealth Exclusive (11.5%)</b>
<b><u>Location where a student accesses care</u></b>	A fixed site on school campus	A fixed site near school campus	Mobile van parked on or near school campus	A fixed site on school campus
<b><u>Location where providers deliver care</u></b>	Physically onsite, and remotely for some services	Physically onsite, and remotely for some services	Physically onsite, and remotely for some services	All primary care delivered remotely and other services may be available onsite or remotely



# Health Centers and Schools: Uniting for Young People's Success

HEALTH CENTERS AND SCHOOLS: UNITING FOR YOUNG PEOPLE'S SUCCESS  
Getting Started Infographic



Powering up a partnership in your community can seem like a big task — but it doesn't have to be! Try out some of these ideas for ways to get started and important tips to keep in mind.

<https://www.sbh4all.org/what-we-do/initiatives/chc-school-partnership/>

# Fiscal Year 2022-2023 Appropriations

## Fiscal Year 2022

### Funded

- ✓ Congress appropriated \$30 million to SBHCs within the Section 330 Health Centers Program
- ✓ Zero dollars were ultimately appropriated to non-FQHC sponsored programs, although funding was included in both House and Senate bills

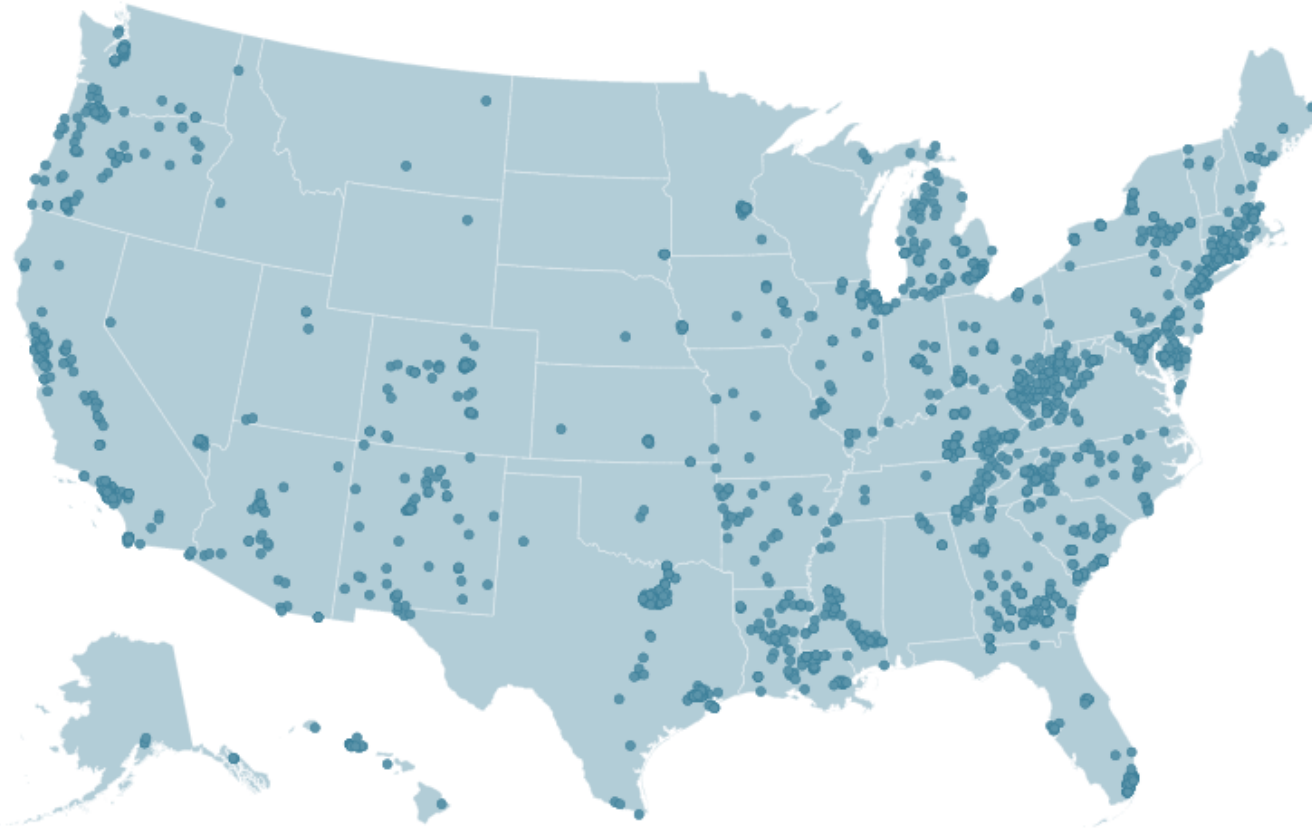
## Fiscal Year 2022 Funding

### Requests

- Senate LHHS Appropriations Subcommittee:
  - \$55 Million for FQHC sponsored SBHCs
  - \$50 Million for all other SBHC sponsor types
- House LHHS Appropriations Subcommittee:
  - \$50 Million for each SBHC program



# ➤ SBHC locations



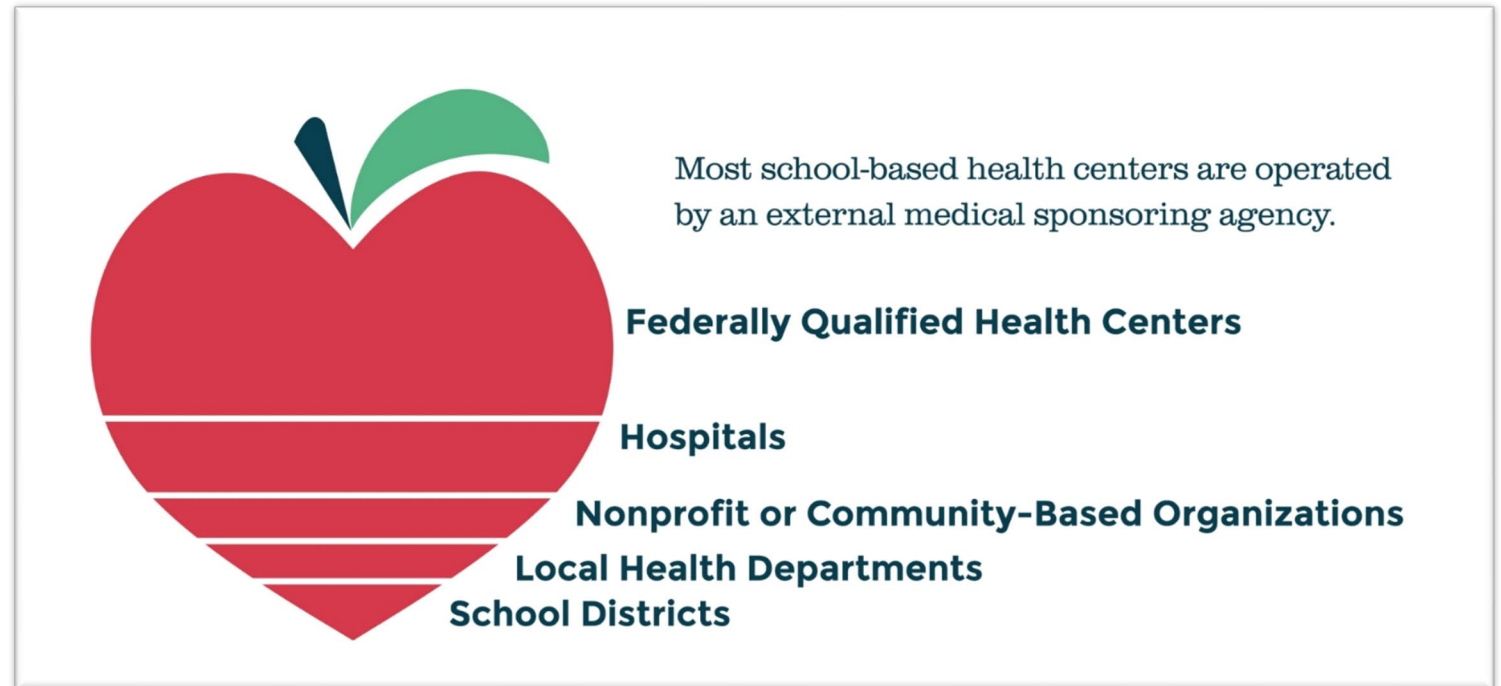
**6.3 million\*** students in **10,629** schools have access to an SBHC

\*Exact number is 6,344,907 students representing 13% of students and 10% of public schools nationwide.



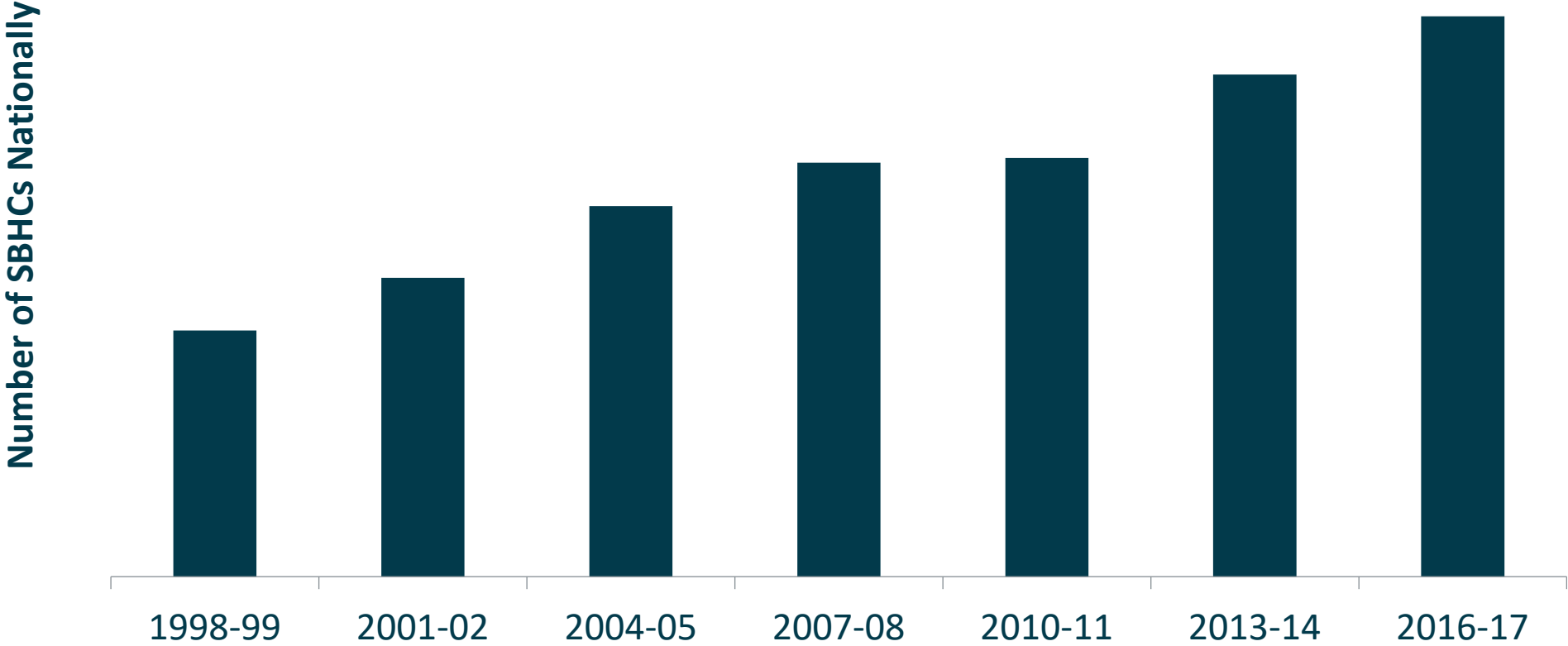
# National SBHC Census: What We Learn

- Number of SBHCs
- Location
- SBHC Growth
- Delivery Models
- Provider Teams
- Sponsor Type



# 2016-17 National School-Based Health Care Census

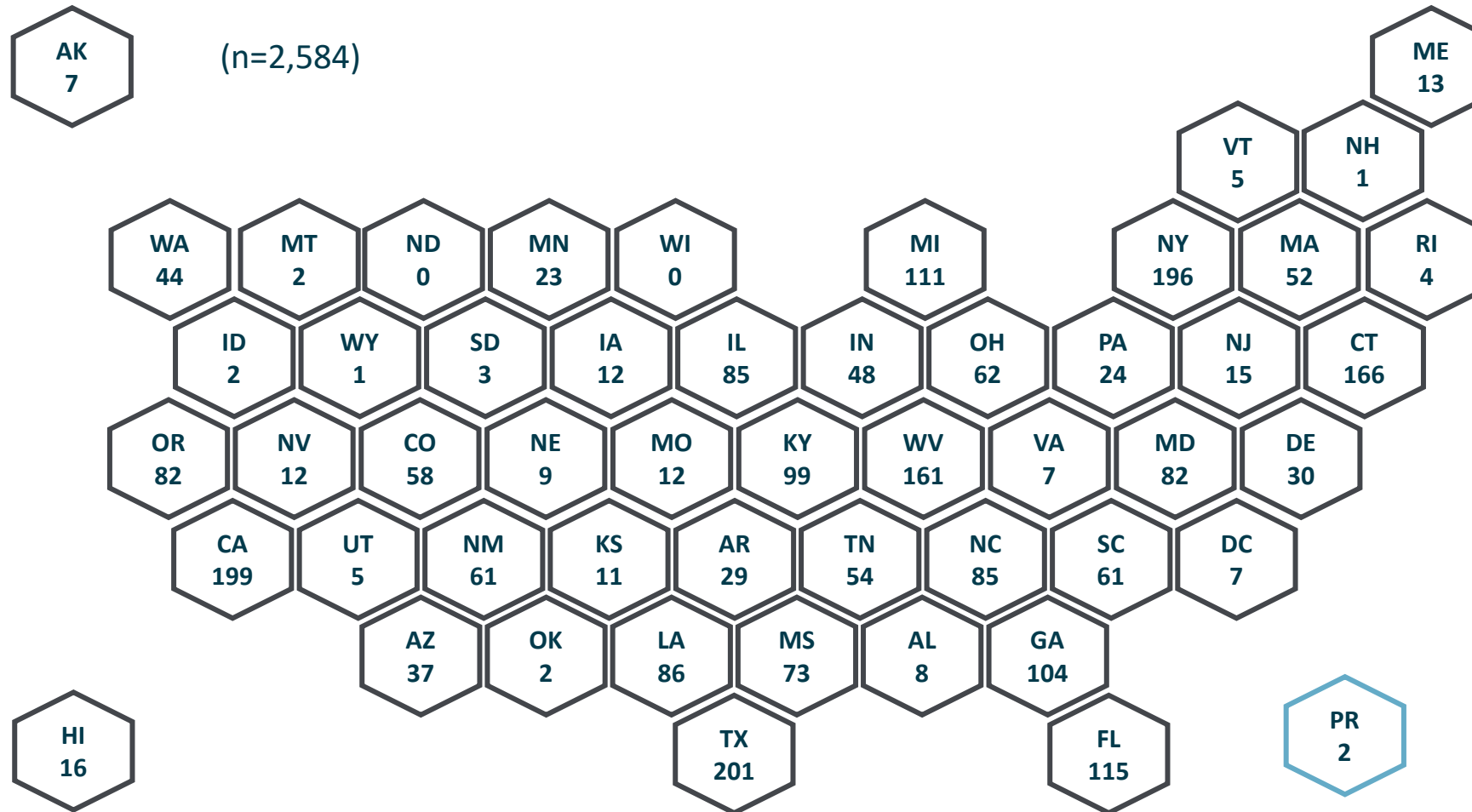
## Number of School-Based Health Centers, 1998-2017



Note: From 1998-99 through 2013-14, behavioral health and oral health only programs were included in the overall count of SBHCs. For the 2016-17 Census, we elected to only include SBHCs with primary care and SBHCs that we confirmed are open.



# Number of SBHCs by state



Note: For the 2016-17 Census, we include only those SBHCs that we confirmed are open and include primary care. These counts include all SBHC delivery models. Telehealth exclusive SBHCs were located in Georgia (73), Indiana (3), Maryland (6), Michigan (5), North Carolina (35), South Carolina (30), Tennessee (2), and Texas (113).

# School-Based Mobile Health Care Landscape



Funding Sources

Services Provided

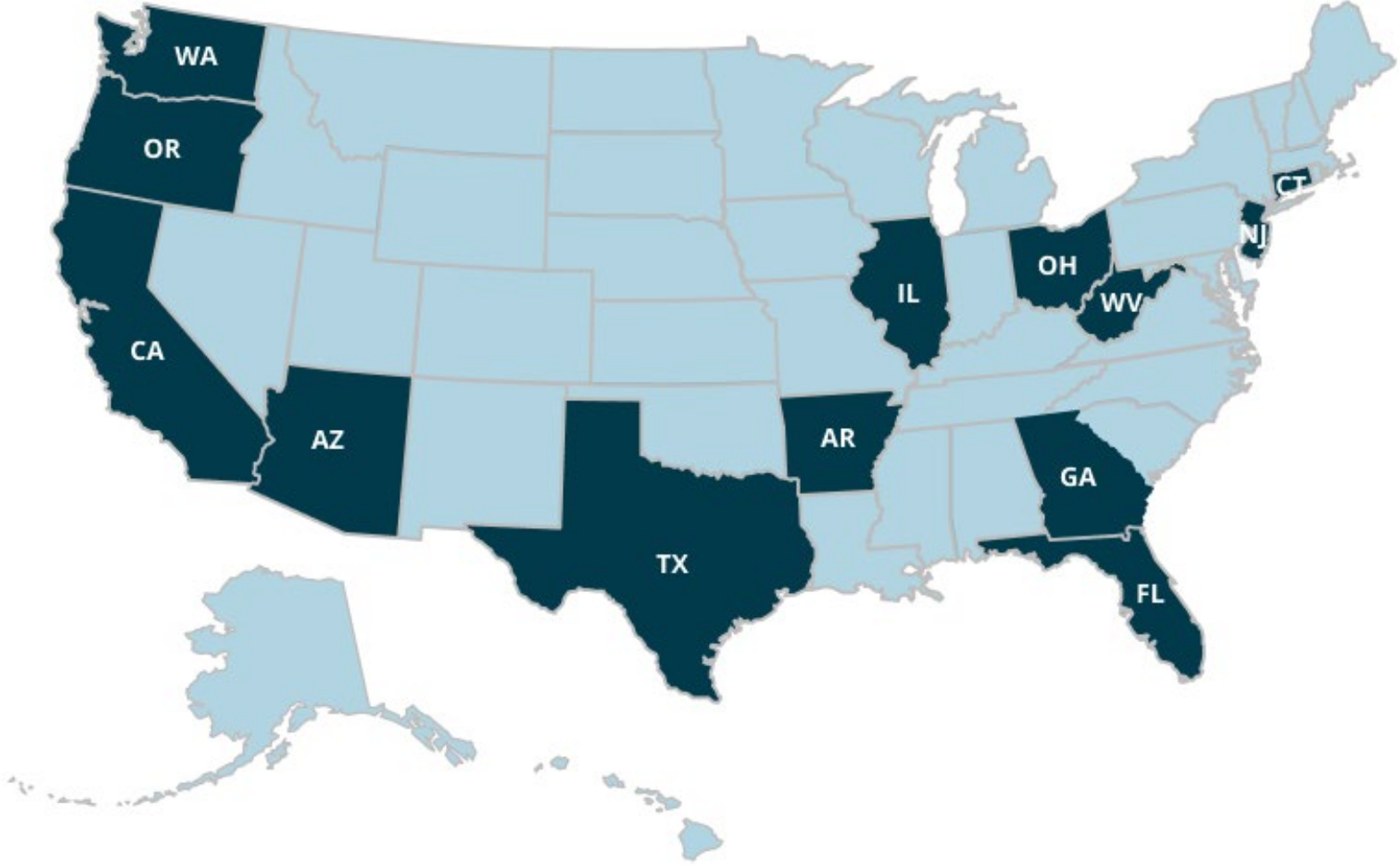
Populations Served



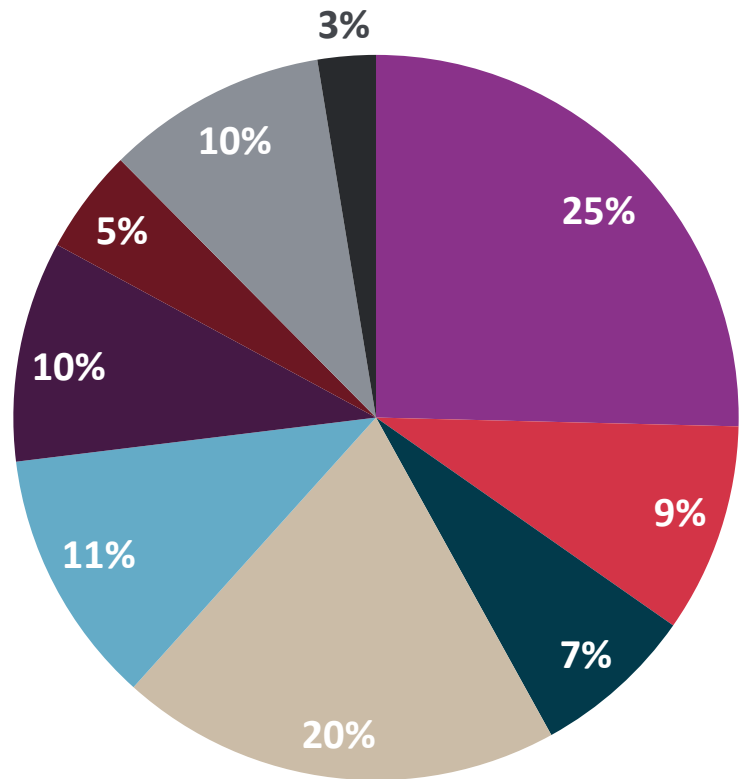
# School-Based Mobile Health Care Landscape



**SCHOOL-BASED  
HEALTH ALLIANCE**  
The National Voice for School-Based Health Care

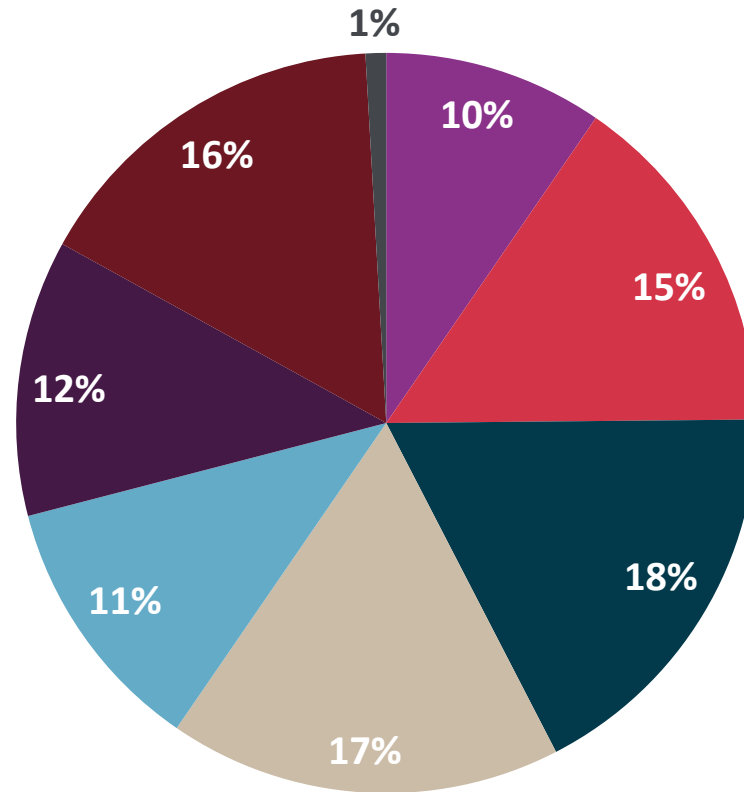


# Funding Sources



- Federal government
- State government
- Local government
- Billing/third party
- Private foundation
- Lead sponsor
- School system
- In-kind support
- Other

# Services Provided

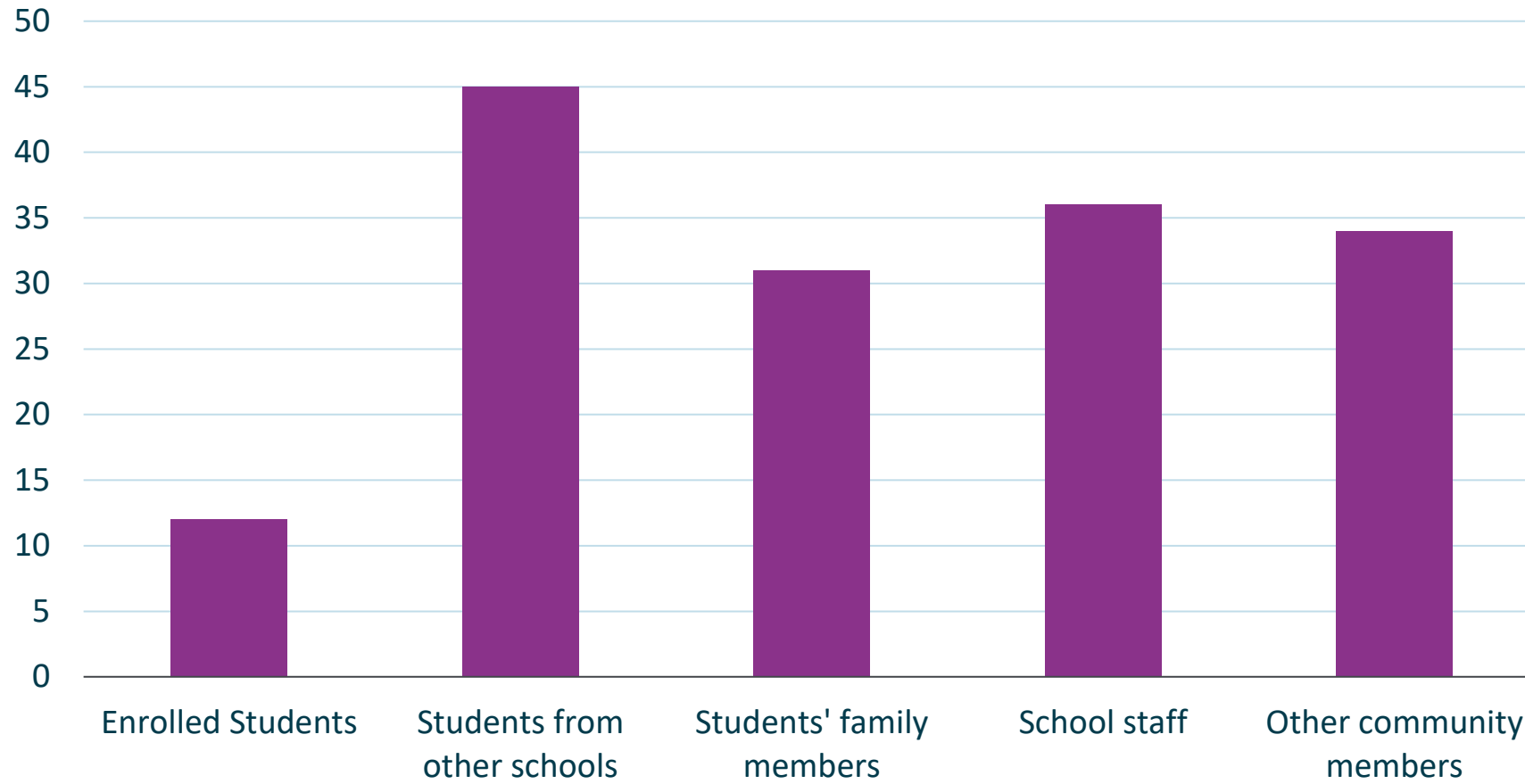


- Primary care
- Behavioral health
- Oral health
- Vision
- Health ed
- SRH
- Youth development
- Other

Services Provided  
N=58



# Population Served



# School-Based Mobile Health Care Landscape

## Opportunities



- School engagement and partnership
- Value of knowing community needs and barriers
- Workforce development
- Customization
- Coordination, collaboration, and communication
- Community buy-in
- Champion

# School-Based Mobile Health Care Landscape

## Barriers

- Schools seeing the value of mobile health
- Low health literacy
- Language barriers
- Staffing
- Vehicle maintenance
- Access to electricity

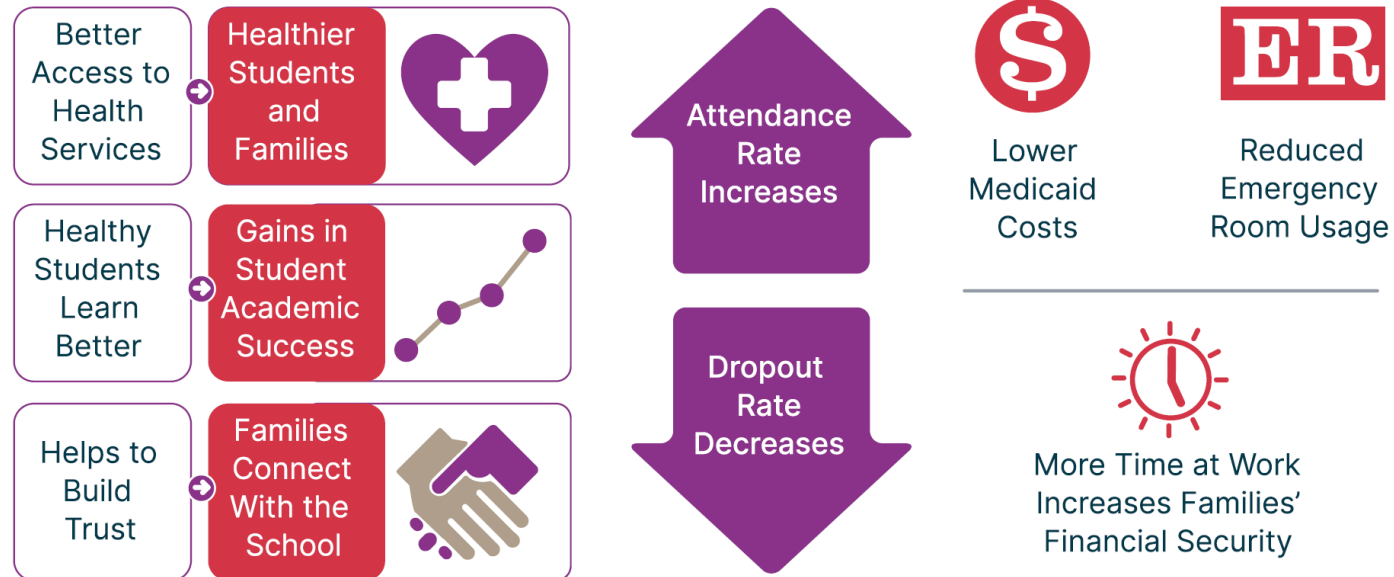




# Working together we can ...

## Healthy Impacts

Health Supports Successful Students & Families



# About School-Based Health Care

## Consents

- Parents/guardians involvement is important and encouraged. They decide what services are or are not beneficial for their children, and their consent is required for care.
- Available services are NOT provided without permission except as allowed by state minor consent law.
- Confidentiality laws and requirements between patients and providers differ across states.

## Scope of Services

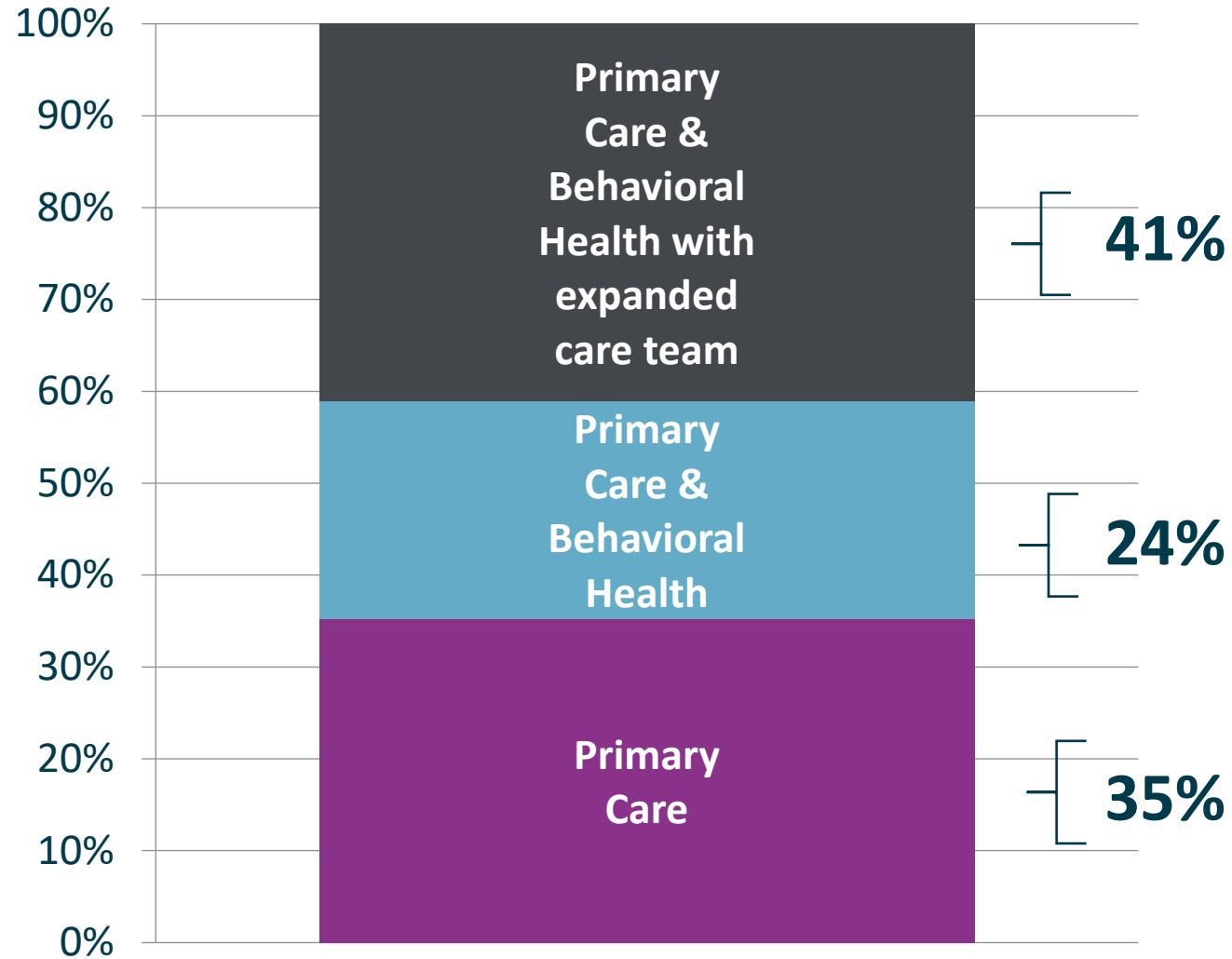
- Services determined at the local level and in accordance with state and local policies and/or law

## Existing Services

- Does NOT replace required school health services for FAPE but instead supports and enhances
- Does NOT replace parents/guardians, school nurses, school counselors, pediatricians, or other existing services.



# ➤ SBHC Provider Teams



## ACCESS

SBHC assures students' access to healthcare and support services to help them thrive.



## STUDENT FOCUS

SBHC team and services are organized around student well-being and academic success.



## HIGH-QUALITY CARE

SBHC delivers high-quality, comprehensive care to achieve optimal outcomes for students.



## COLLABORATIVE SCHOOL PARTNERSHIPS

SBHC is typically governed and administered separately from the school, works collaboratively with the educational environment to support the school's mission of student success.

## SCHOOL WELLNESS

SBHC engages with the school to participate, support, and improve a culture of health across the school community.



## SYSTEMS COORDINATION

SBHC coordinates across relevant systems of care that share in the well-being of its patients.



# Core Competencies

## SUSTAINABILITY

SBHC employs sound business management practices to ensure that health services are sustained long-term.



# Resource Links

- **School-Based Health Alliance:** <https://www.sbh4all.org/>
- **The Blueprint Resources (tools, examples, guides, including MOU's):**  
<https://www.sbh4all.org/resources/the-blueprint/>
- **Mapping Tool:** <https://www.sbh4all.org/resources/mapping-tool/>
- **Hallways to Health:** <https://tools.sbh4all.org/hallways-to-health/hallways-to-health-home/>
- **Health Centers and Schools: Uniting for Young People's Success:**  
<https://conferences.nachc.org/nachc/sessions/2623/view>
- **SBHC Resource Hub:** <https://www.sbh4all.org/resources/>



# School-Based Mobile Health Care Toolkit



Program  
Models

Partnerships

Implementation

Sustainability

Case Studies  
and Practice  
Scenarios

Evaluation and Continuous Improvement



# Stay Connected!

## 1. Subscribe to our bi-weekly e-newsletter (Digest)

Go to [sbh4all.org](https://sbh4all.org) > scroll down to the bottom of the page > subscribe!

## 2. Follow us on social media



<https://www.facebook.com/SchoolBasedHealthAlliance>



<https://twitter.com/sbh4all>



<https://www.linkedin.com/company/school-based-health-alliance/>



<https://www.instagram.com/sbh4all/>



**CONNECT**

- Facebook
- Twitter
- LinkedIn
- Instagram

**LINKS**

- Who We Are
- What We Do
- Resources
- Pressroom
- Contact
- Donate
- Data Portal

**Subscribe**

Receive the latest news and resources straight to your inbox.

FIRST NAME

LAST NAME

EMAIL ADDRESS

**SUBMIT**

# Questions





# Thank you!

**Contact Us:**

**School-Based Health Alliance**

**[info@sbh4all.org](mailto:info@sbh4all.org)**

**Dannielle Dobbins, M.Ed.,  
Director of Programs**

**[ddobbins@sbh4all.org](mailto:ddobbins@sbh4all.org)**